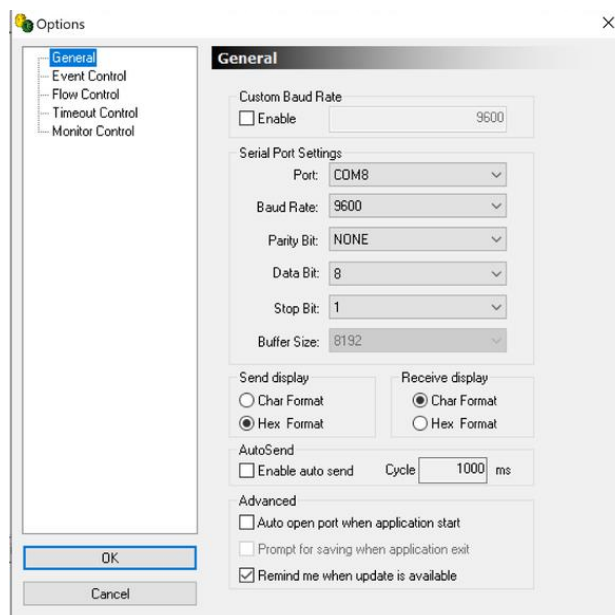


How to Set Up Geeetech in AccessPort

First launch AccessPort you will click on configuration on to the top left

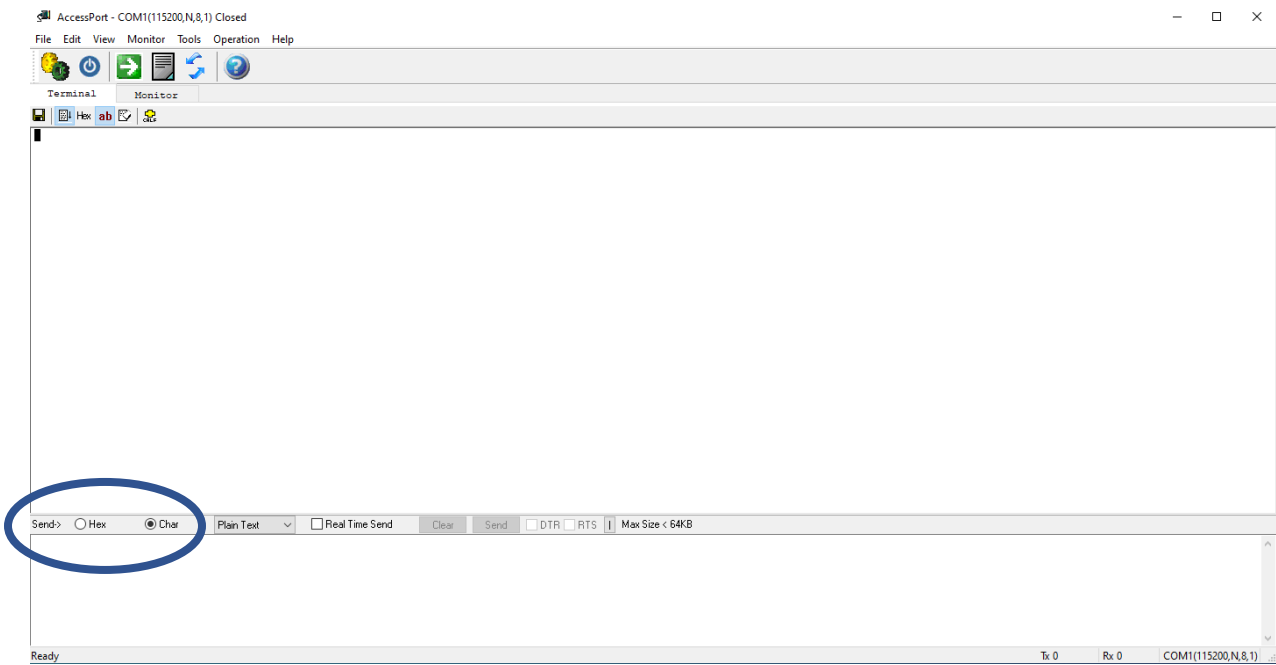


Here you will select the settings seen on this image:



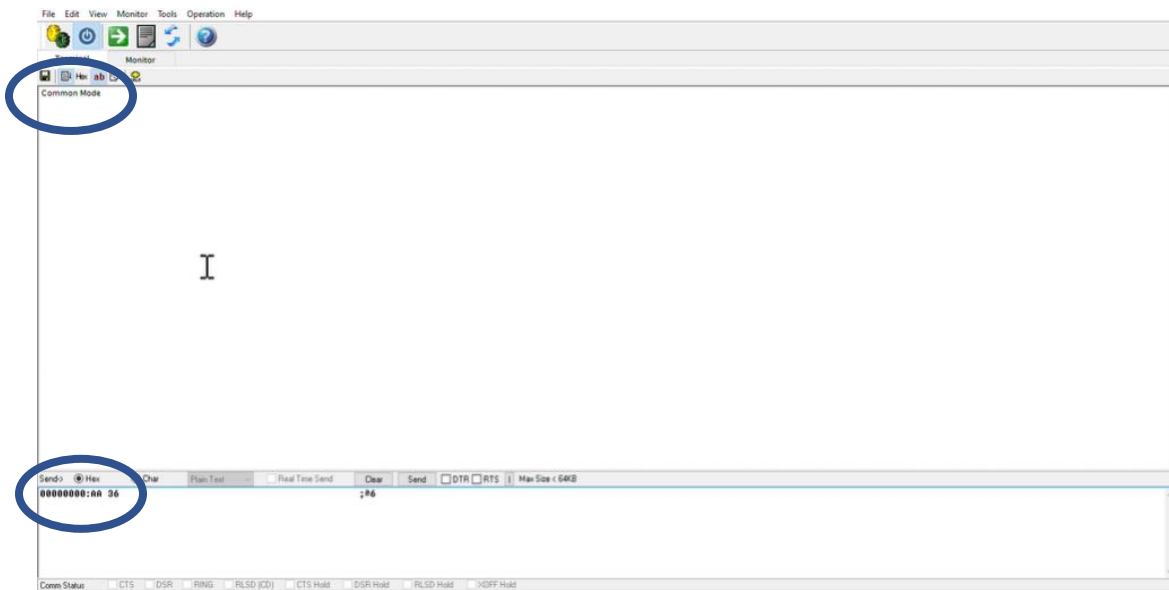
Click OK

Then on the home screen on the bottom right, where it says SEND switch to CHAR then back to HEX



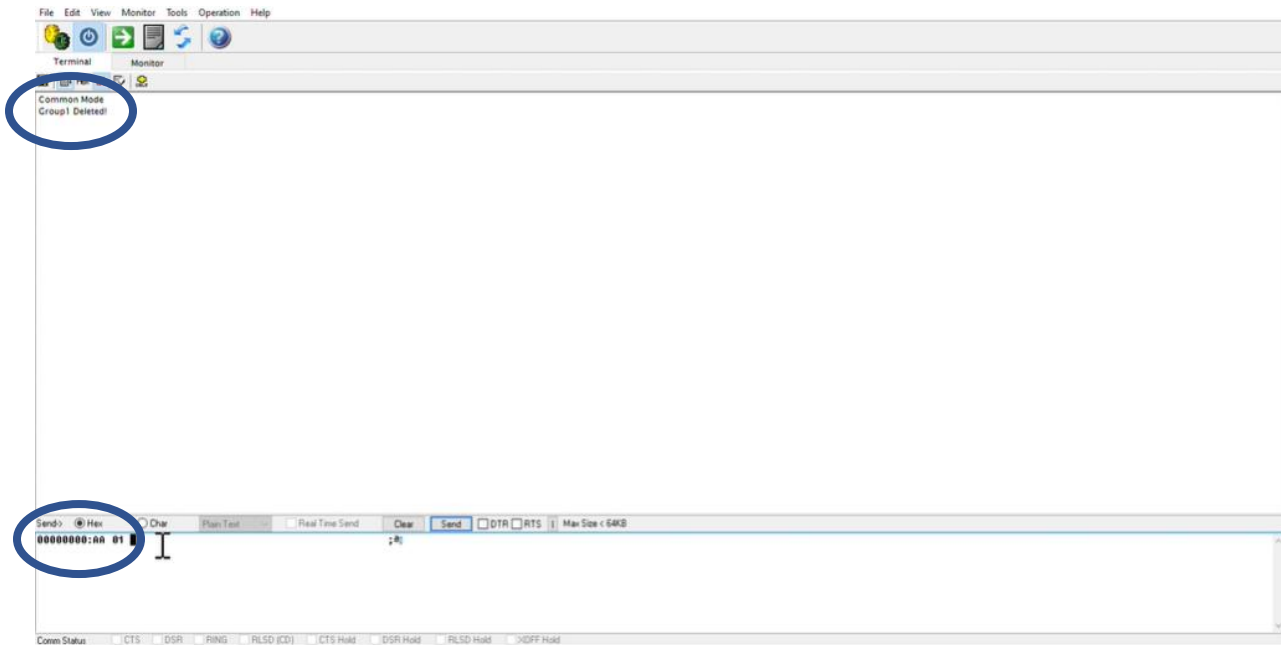
Then Send in the first command by typing AA36 and press send (cannot hit enter)

This sets it in common mode (Validated by the top of the screen displaying "Common Mode.")



Then type in AA 01 and send that command

This deletes group one (Validated by the top of the screen displaying “Group1 Deleted!”)



Then type AA 11 and send that command

This programs group 1, if you want group 2 then type AA 12 and if you want group 3 then type AA13

Then the user begins to program their voice (see “How to Set Up Voice Module”)

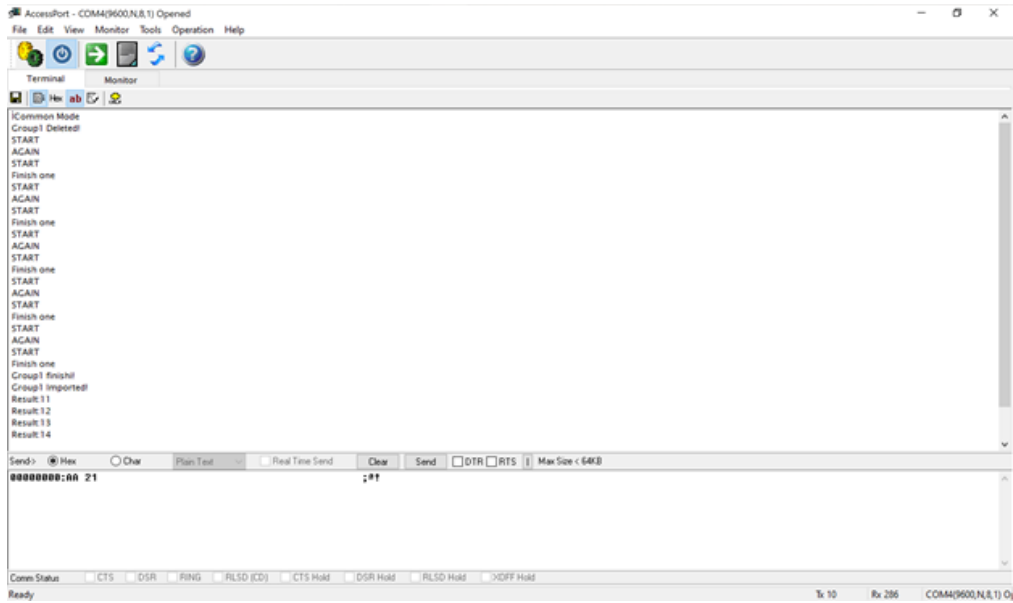
Once group 1 finished, it needs to be imported

Type AA 21 and hit send

(To import group 2 type AA 22 and to import group 3 type AA 23)

Then Test the results by reading aloud the commands (see “How to Set Up Voice Module”)

A successful run looks like this:



Once you have results 11-15 the Geetech is ready to be plugged into the final prototype